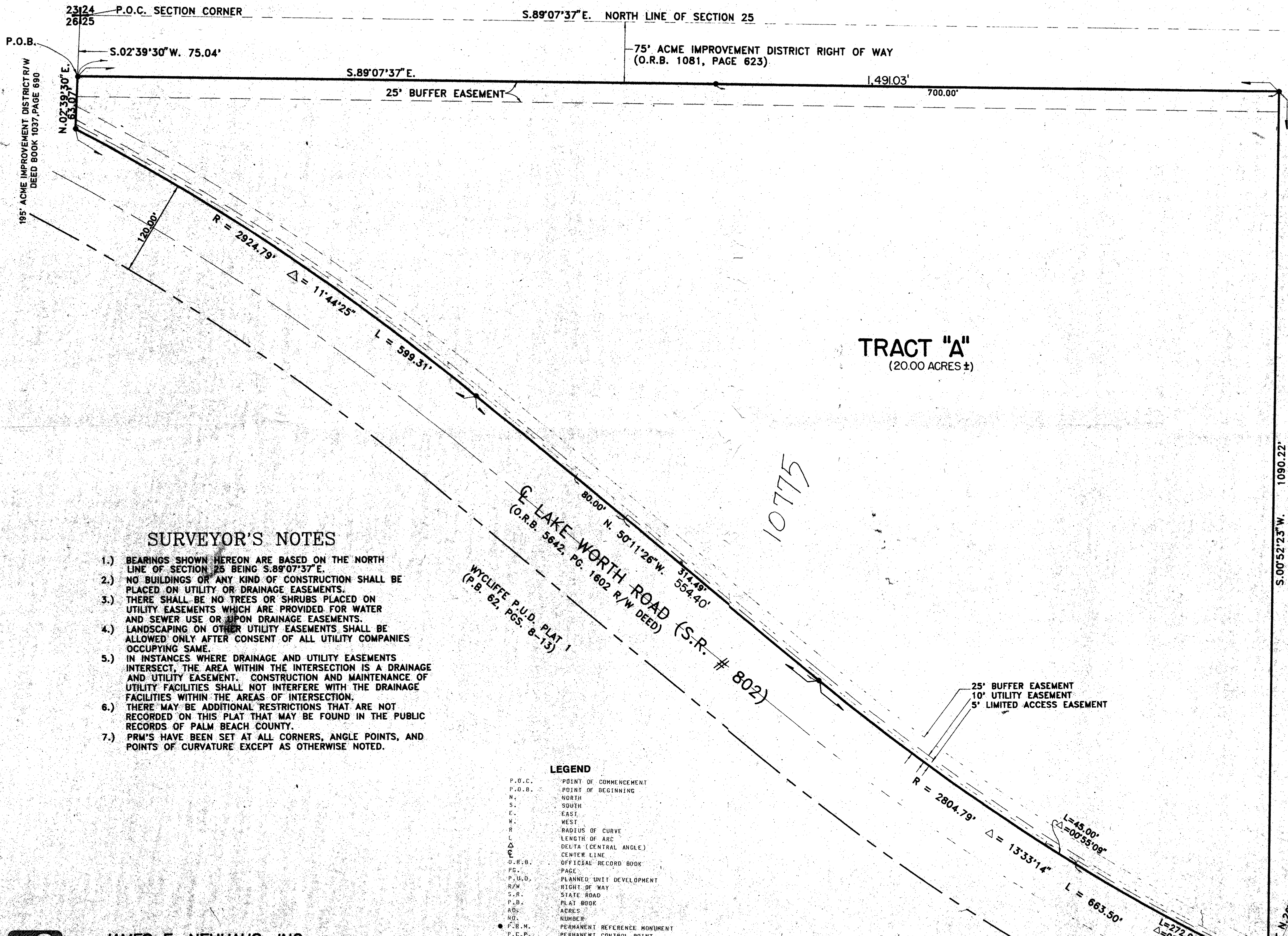


**ELEMENTARY SCHOOL "K"**  
 PART OF WYCLIFFE P.U.D.  
 BEING A PLAT OF A PARCEL OF LAND LYING IN  
 SECTION 25, TOWNSHIP 44 SOUTH, RANGE 41 EAST  
 SHEET TWO OF TWO  
 PETITION NUMBER 86-104

**166**

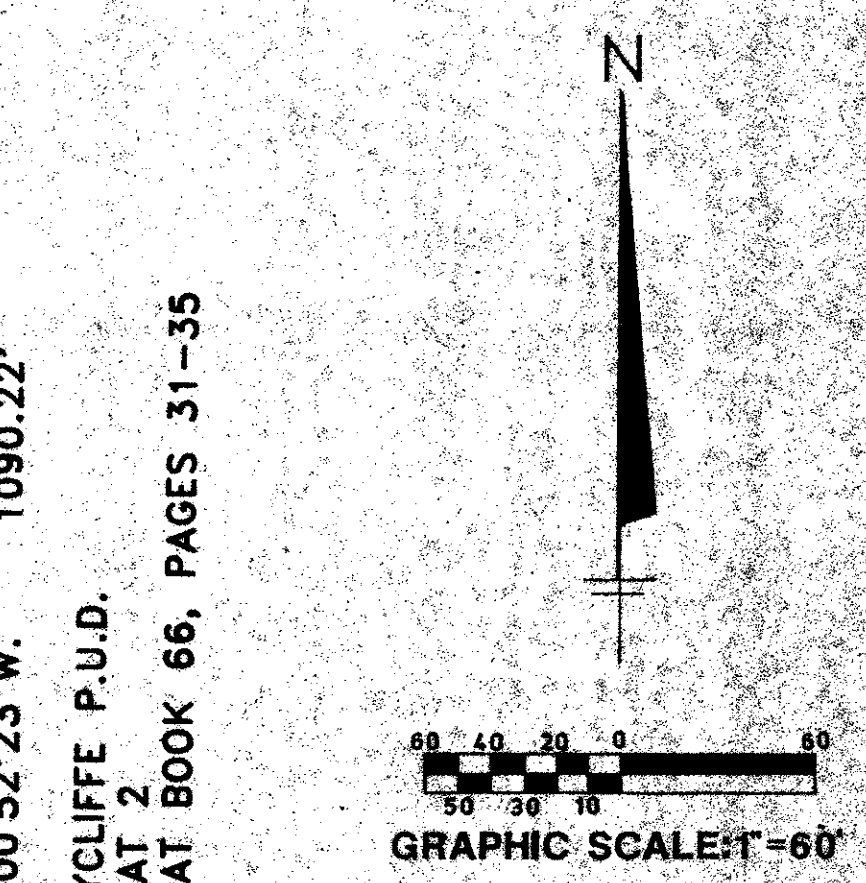


**SURVEYOR'S NOTES**

- 1.) BEARINGS SHOWN HEREON ARE BASED ON THE NORTH LINE OF SECTION 25 BEING S.89°07'37"E.
- 2.) NO BUILDINGS OR ANY KIND OF CONSTRUCTION SHALL BE PLACED ON UTILITY OR DRAINAGE EASEMENTS.
- 3.) THERE SHALL BE NO TREES OR SHRUBS PLACED ON UTILITY EASEMENTS WHICH ARE PROVIDED FOR WATER AND SEWER USE OR UPON DRAINAGE EASEMENTS.
- 4.) LANDSCAPING ON OTHER UTILITY EASEMENTS SHALL BE ALLOWED ONLY AFTER CONSENT OF ALL UTILITY COMPANIES OCCUPYING SAME.
- 5.) IN INSTANCES WHERE DRAINAGE AND UTILITY EASEMENTS INTERSECT, THE AREA WITHIN THE INTERSECTION IS A DRAINAGE AND UTILITY EASEMENT. CONSTRUCTION AND MAINTENANCE OF UTILITY FACILITIES SHALL NOT INTERFERE WITH THE DRAINAGE FACILITIES WITHIN THE AREAS OF INTERSECTION.
- 6.) THERE MAY BE ADDITIONAL RESTRICTIONS THAT ARE NOT RECORDED ON THIS PLAT THAT MAY BE FOUND IN THE PUBLIC RECORDS OF PALM BEACH COUNTY.
- 7.) PRM'S HAVE BEEN SET AT ALL CORNERS, ANGLE POINTS, AND POINTS OF CURVATURE EXCEPT AS OTHERWISE NOTED.

**LEGEND**

P.O.C.	POINT OF COMMENCEMENT
P.O.B.	POINT OF BEGINNING
N.	NORTH
S.	SOUTH
E.	EAST
W.	WEST
R	RADIUS OF CURVE
L	LENGTH OF ARC
Δ	DELTA (CENTRAL ANGLE)
C.L.	CENTER LINE
O.R.B.	OFFICIAL RECORD BOOK
P.D.	PAGE
P.U.D.	PLANNED UNIT DEVELOPMENT
R/W	RIGHT OF WAY
S.R.	STATE ROAD
P.B.	PLAT BOOK
A.B.	ACRES
N.D.	NUMBER
P.R.M.	PERMANENT REFERENCE MONUMENT
P.C.P.	PERMANENT CONTROL POINT
F.I.R.	FOUND IRON ROD



S.00°52'23"W. 1090.22'  
 WYCLIFFE P.U.D.  
 PLAT 2  
 PLAT BOOK 66, PAGES 31-35

TAZ # 737

PAGE 166  
 BOOK 68  
 FLOOD ZONE B  
 FLOOD RTs/SE  
 QUAD # 63  
 SE 26-104  
 ZIP CODE 33467  
 FID NAME SAME  
 DATE 7/11

**JAMES E. NEUHAUS, INC.**  
 Consulting Engineers, Surveyors, Planners  
 1491 U.S. Highway One, Suite 130 • Palm Beach Gardens, FL 33408  
 P.O. Box 31685, Palm Beach Gardens, FL 33420 • Tel. 407/622-1300 Fax. 407/622-1428

0520-01P  
 68/166  
**ELEMENTARY SCHOOL "K"**